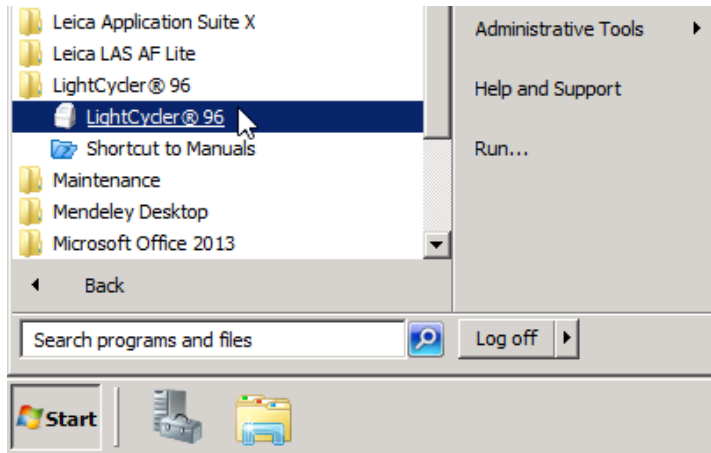
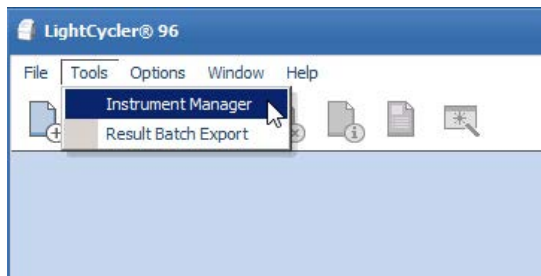


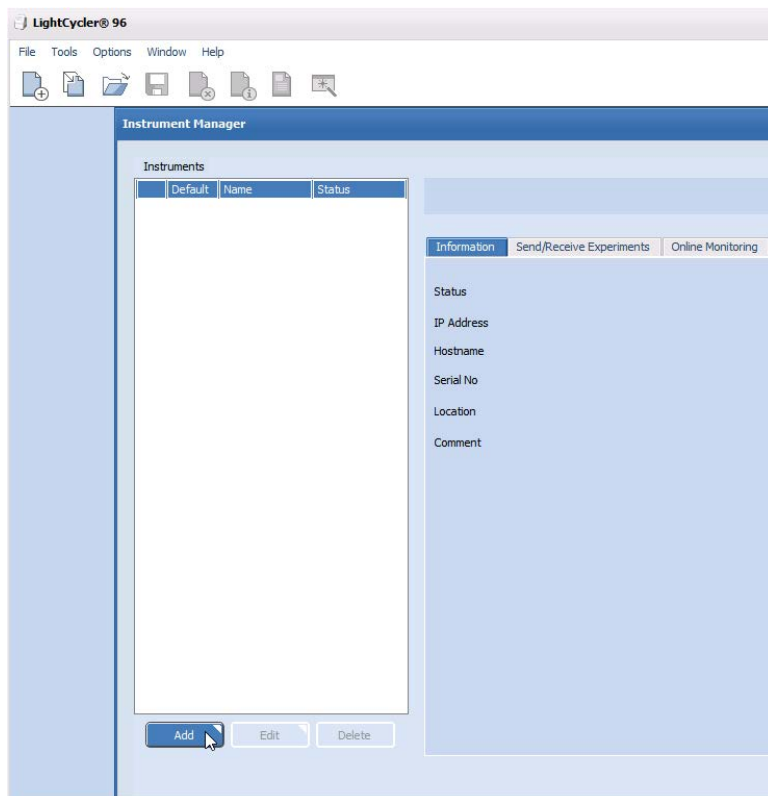
Connecting the LightCycler96 of the anatomy



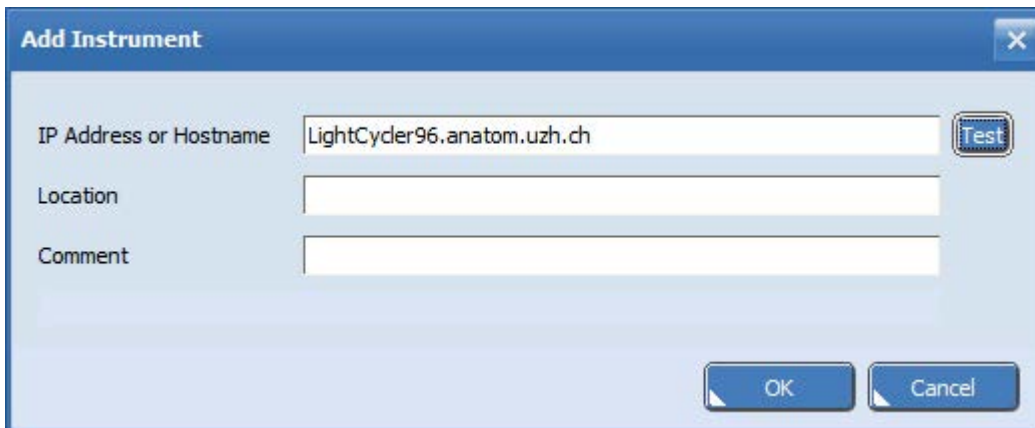
Open the program **LightCycler@ 96**



Open the option **Tools ==> Instrument Manager**.



Open a connection with **Add**.



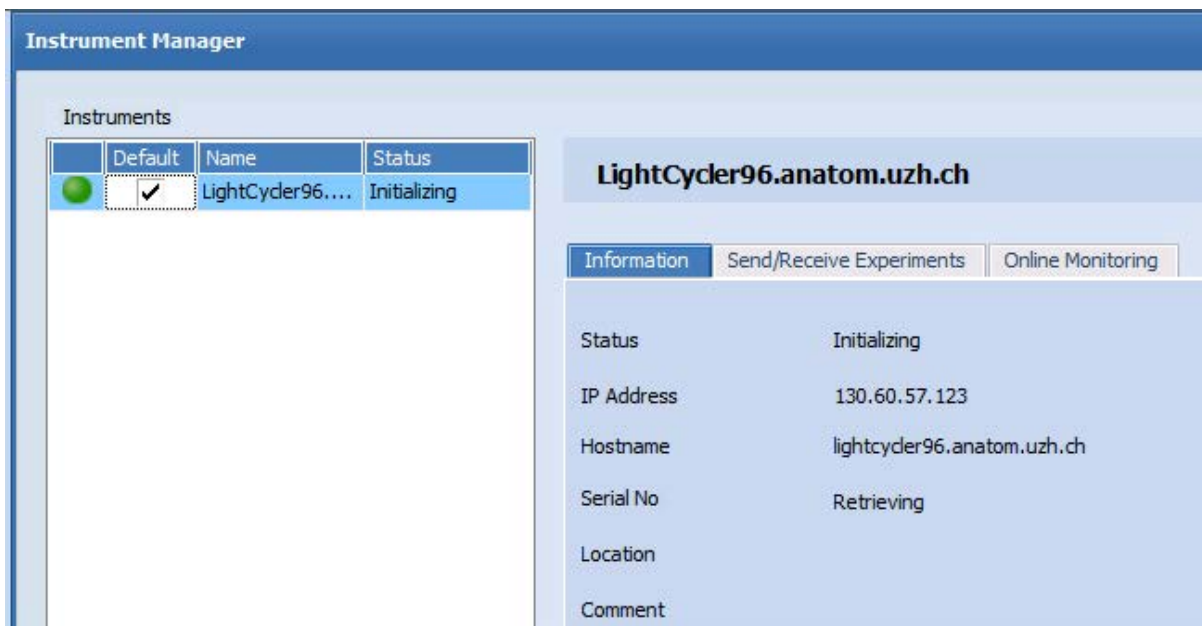
Add Instrument

IP Address or Hostname:

Location:

Comment:

LightCycler96.anatom.uzh.ch



Instrument Manager

Instruments

	Default	Name	Status
<input checked="" type="checkbox"/>	<input checked="" type="checkbox"/>	LightCycler96....	Initializing

LightCycler96.anatom.uzh.ch

Information | Send/Receive Experiments | Online Monitoring

Status: Initializing

IP Address: 130.60.57.123

Hostname: lightcycler96.anatom.uzh.ch

Serial No: Retrieving

Location:

Comment:

If the indicator light is **green** then the connection to the device could be established. If the indicator remains **red**, the device is switched off.



The folder "[\\files.anatom.uzh.ch\LightCycler96](file://files.anatom.uzh.ch/LightCycler96)" will save all existing data from the LightCycler96 device.